

# FastFacts

Selling Made Simple

NotchBoard®

## DOES YOUR CUSTOMER REPORT...

- damage to outer corners of product during transport?
- inability to stack/load without damage?
- excessive packaging and waste?

*If any of these questions are answered "yes," NotchBoard® may be an appropriate product solution to explore with your customer.*

## NotchBoard® MAIN SELLING POINTS

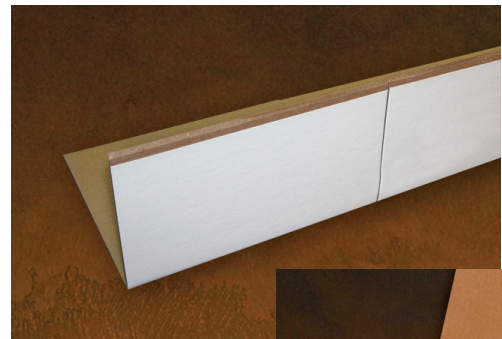
### 1 EFFECTIVE CORNER PROTECTION

Features precise die-cut notches and scores that allow users to quickly manipulate into a 90-degree corner shape.



### 2 VERSATILE PACKAGING SOLUTION

Traditional "V" cut NotchBoard protects corners with ease; Optional straight-cut NotchBoard leaves the full leg intact, allowing for increased compression strength.



### 3 EFFICIENT CONSTRUCTION

Provides excellent protection with minimal material, and ships and stores unfolded for freight/storage savings.



 **Laminations®**  
Great Northern Corporation

**LINC**  
SYSTEMS   
800.513.9918 | [LINCsystems.com](http://LINCsystems.com)

YOUR **FIRST CALL** FOR PROTECTIVE PACKAGING SOLUTIONS